

Movimenti in Sicurezza

Movements in sureness

> > >

> > > > >



Email: paravia@paravia.net

Tel: +39 089 84.92.94

Fax: +39 089 98.30.120

Web: www.paravia.net

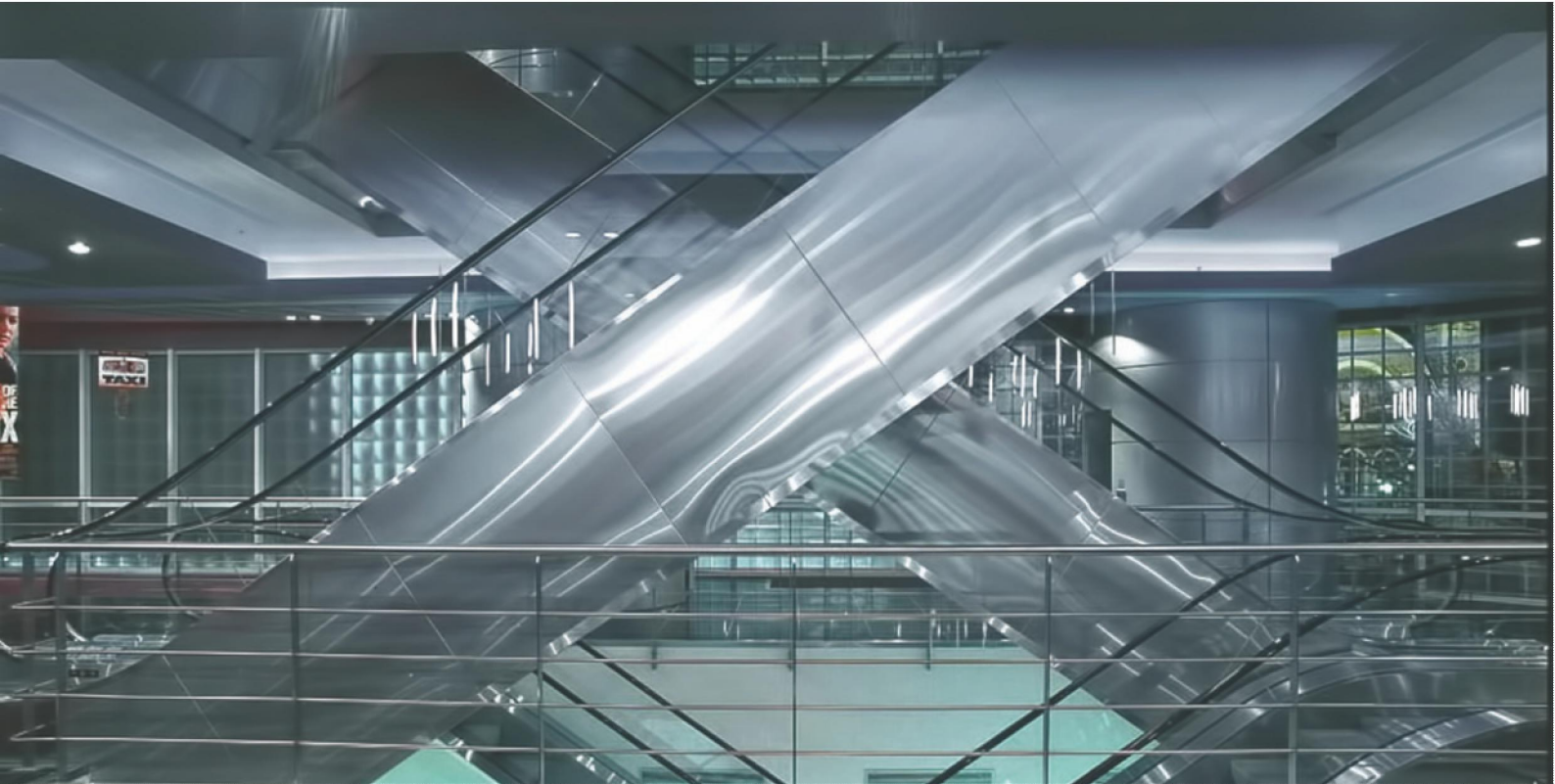


SYSTEMS FOR THE FUTURE

Escalators



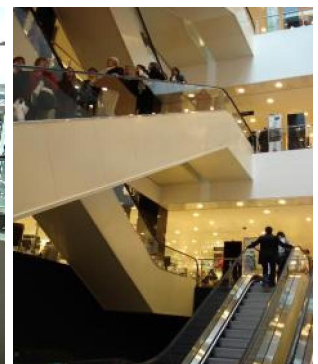
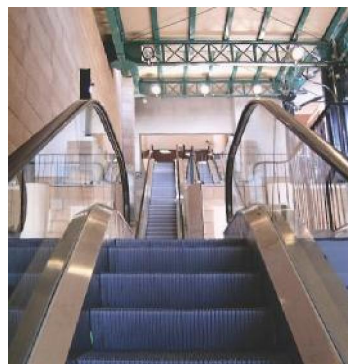
www.paravia.net



Comfort : wellness in movement

This simple concept is on the basis of the choices that the human being makes everyday to improve his condition. The need for movement in all its significats is connatural to the spirit of evolution, in the continuous search for answers. Nowadays, it takes place with an increasing speed and each choice is made according to the resultig wellness, both material and interior. In this sense, the concept of comfort is therefore tied to the search for solutions that connects the need for reaching the purpose and the resources used. The product is no longer understood as good, but as an expression of the company's philosophy proposed in all its aspects.

Paravla Srl well identifies itself in these concepts and summarizes them as its basic philosophy. International customers recognize in our Men and Services, with priority to our Products, our main objective which is ensuring solutions to contribute to the growth of Companies and the achievement of the objectives, based on an ongoing relationship in constant checking. All this represents a daily challenge in which the Company continues to invest projects, searching for the best balance between the components of the business. In this context, Paravia Srl's Men, Services and Products can meet any requirements of anyone who approches to the market in a dynamic way, offering solutions, suggesting alternatives, stimulating new business prospects to its interlocutors.



Escalators



Escalators and conveyors have become essential for the transport of persons in buildings where it is necessary to accelerate and regulate the traffic, such as train stations, subways, major hotels, airports, shopping centers, mechanized path, etc ...

As a result of the most recent technology, our products are equipped with engines and winches of high performance as well as some of the most modern control microprocessors provided, according to the highest standards of quality, the efficiency in time, the long-term, the energy consumption reduction, and the walking comfort in compliance with EN115 standards.

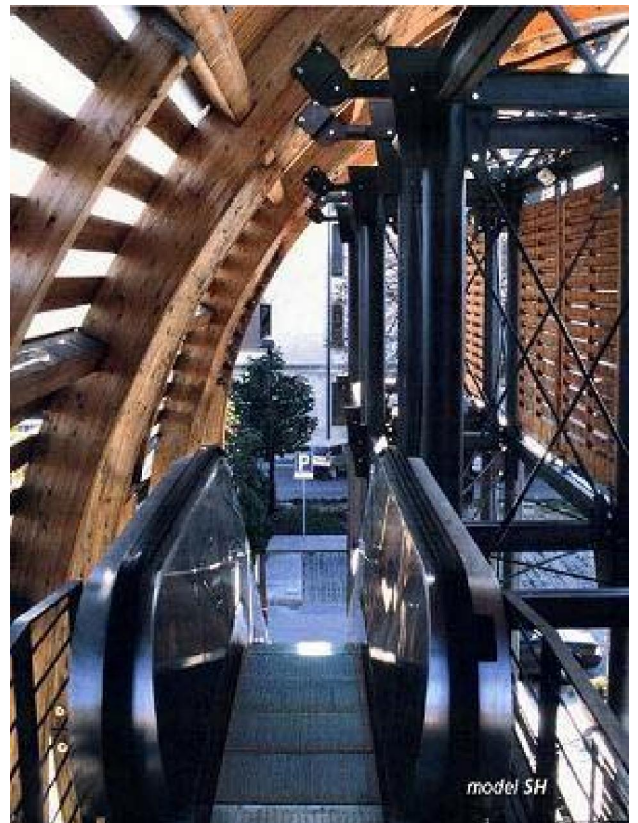
Modern construction and design compact, attractive appearance, wide range of accessories and finishes can offer designers the ideal solution for their achievements. All components are thoroughly tested by production unit with the adoption of a system of quality management according to ISO 9001.

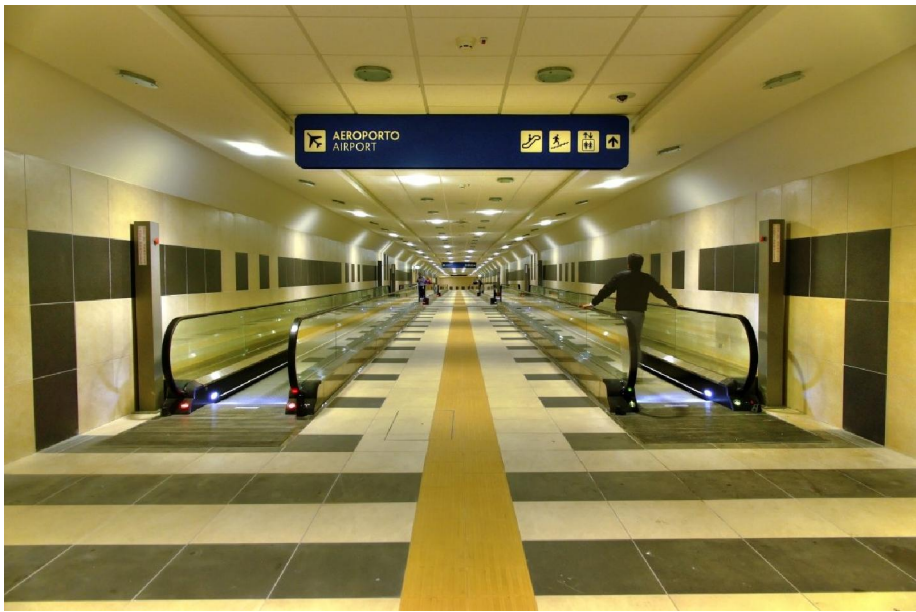
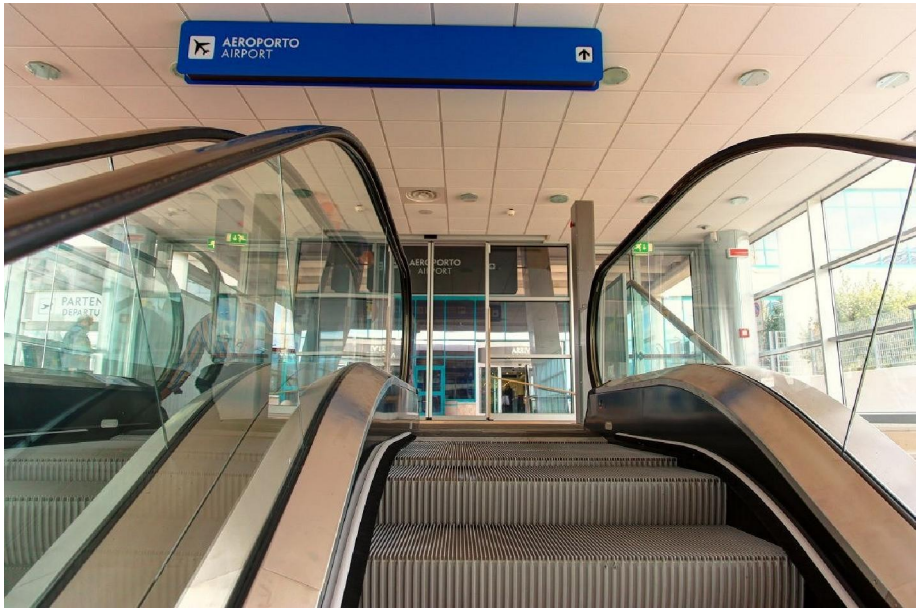
SM

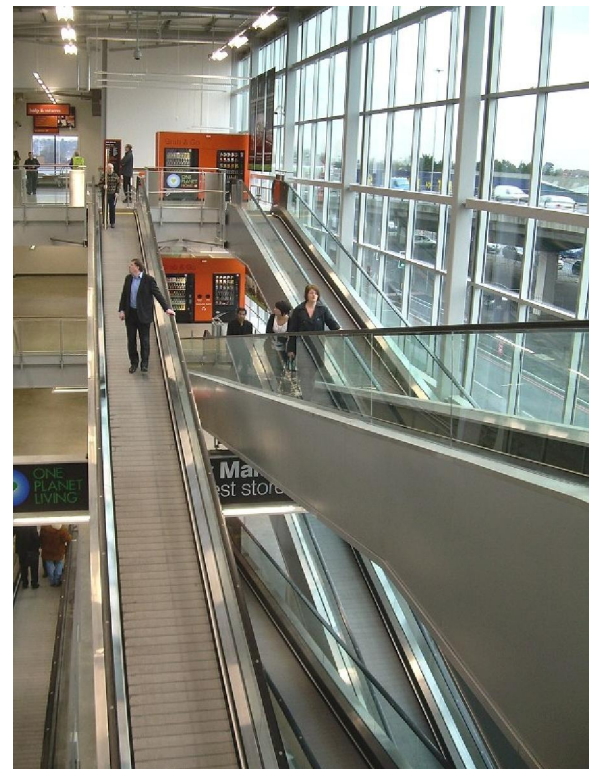
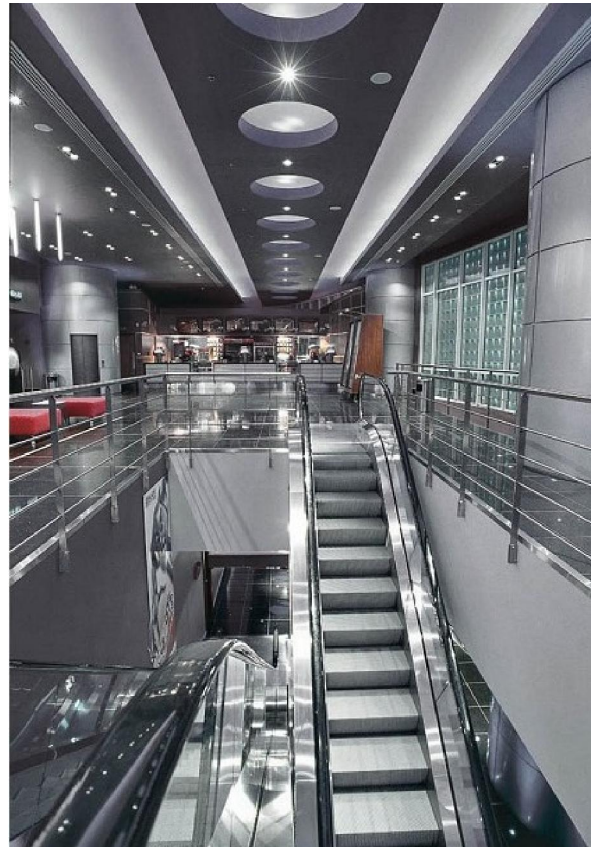
This product complies with the European EN115 standards, developed to collect all the installations' needs in a context of a particular value, requiring an advanced product with a high-impact aesthetic refinement and elegance. For achieving its structure, it is used in a particular rectangular steel profile, in particular the operation is controlled by a microprocessor that detects faults and reports them on special test device display.

SH

Designed for extreme traffic conditions, it is distinguished by a reinforced structure of many components, ensuring a continuous operation up to 20 hours, with the inclusion of a lubrication system and special equipment of additional security.







Mechanical escalators

SM

ESCALATORS For private use			MAIN FEATURES			
Model	Steps	Installation	Vertical rise (m)	Inclination (°)	Step width (mm)	Speed (m/s)
SM 302	2	Indoor, outdoor with coverage	from 2,0m to 6,0m	30°	600 – 800 - 1000	0,50
SM 303	3	Indoor, outdoor with coverage	from 2,0m to 7,5m	30°	600 – 800 - 1000	0,50
SM 352	2	Indoor, outdoor with coverage	from 2,0m to 6,0m	35°	600 – 800 - 1000	0,50
SM 353	3	Indoor, outdoor with coverage	from 2,0m to 6,0m	35°	600 – 800 - 1000	0,50

Duty Cycle up to 16 hours a day

SH

ESCALATORS For private use			MAIN FEATURES			
Model	Steps	Installation	Vertical rise (m)	Inclination (°)	Step width (mm)	Speed (m/s)
Intensive use SH 302	2	Indoor, completely outdoor	from 2,0m to 6,0m	30°	600 – 800 - 1000	0,65
Intensive use SH 303	3	Indoor, completely outdoor	from 2,0m to 12,5m	30°	600 – 800 - 1000	0,65
Intensive use SH 304	4	Indoor, completely outdoor	from 2,0m to 12,5m	30°	600 – 800 - 1000	0,65
Intensive use SH 352	2	Indoor, completely outdoor	from 2,0m to 6,0m	35°	600 – 800 - 1000	0,65
Intensive use SH 353	3	Indoor, completely outdoor	from 2,0m to 6,0m	35°	600 – 800 - 1000	0,65

Duty Cycle up to 24 hours a day

Step / Pallet Width [m]	Nominal Speed [m/s]	
	0,50	0,65
600	3600 pers/h	4400 pers/h
800	4800 pers/h	5900 pers/h
1000	6000 pers/h	7300 pers/h

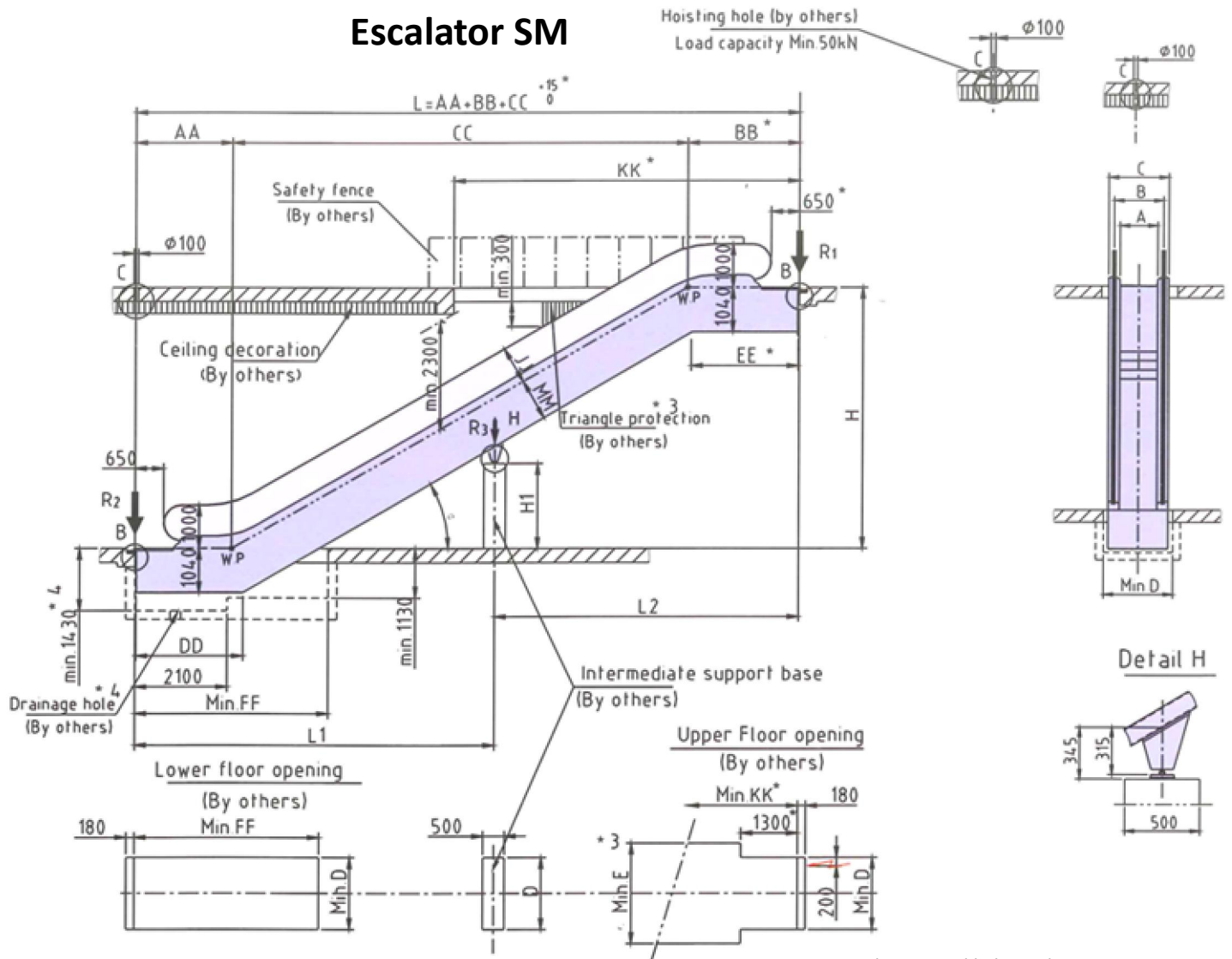
Capacity per hour according to step width and speed

Available with vertical balustrades in tempered safety glass (standard), upon request solid vertical or inclined in stainless steel

Intermediate support in case of length of more than 15m

It is possible to realize multislope and altitude up to 35 m in height escalators type

Escalator SM



For slim-vertical balustrade

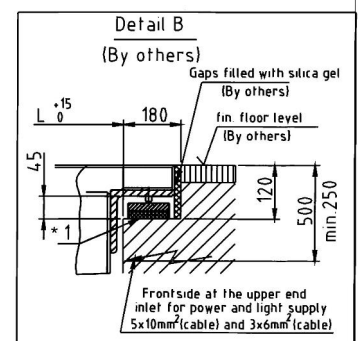
Type	angle	AA	BB	CC	FF	JJ	KK
SM-302	30°	2195	2564	H x 1.732	4200	870	7900
SM-352	35°	2229	2648	H x 1.428	4000	850	7100
SM-303	30°	2595	2964	H x 1.732	4600	870	8300
SM-353	35°	2629	3048	H x 1.428	4400	850	7500

A	600	800	1000
B	837	1037	1237
C	1145	1345	1545
D	1200	1400	1600
E	1850	2050	2250

Type	angle	DD		EE		MM	
		angle truss	pipe truss	angle truss	pipe truss	angle truss	pipe truss
SM-302	30°	2230	2205	2470	2482	960	940
SM-352	35°	2385	2352	2450	2455	980	960
SM-303	30°	2630	2605	2870	2882	960	940
SM-353	35°	2785	2752	2850	2855	980	960

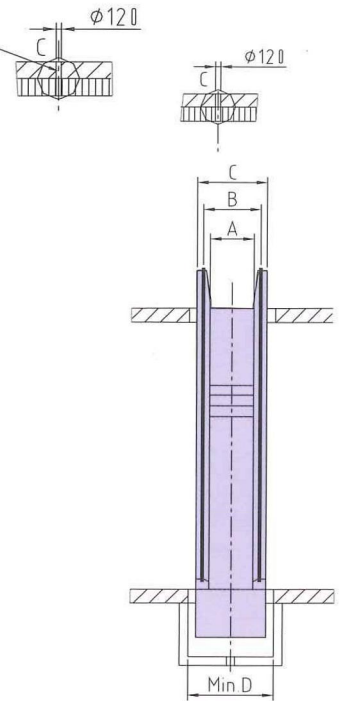
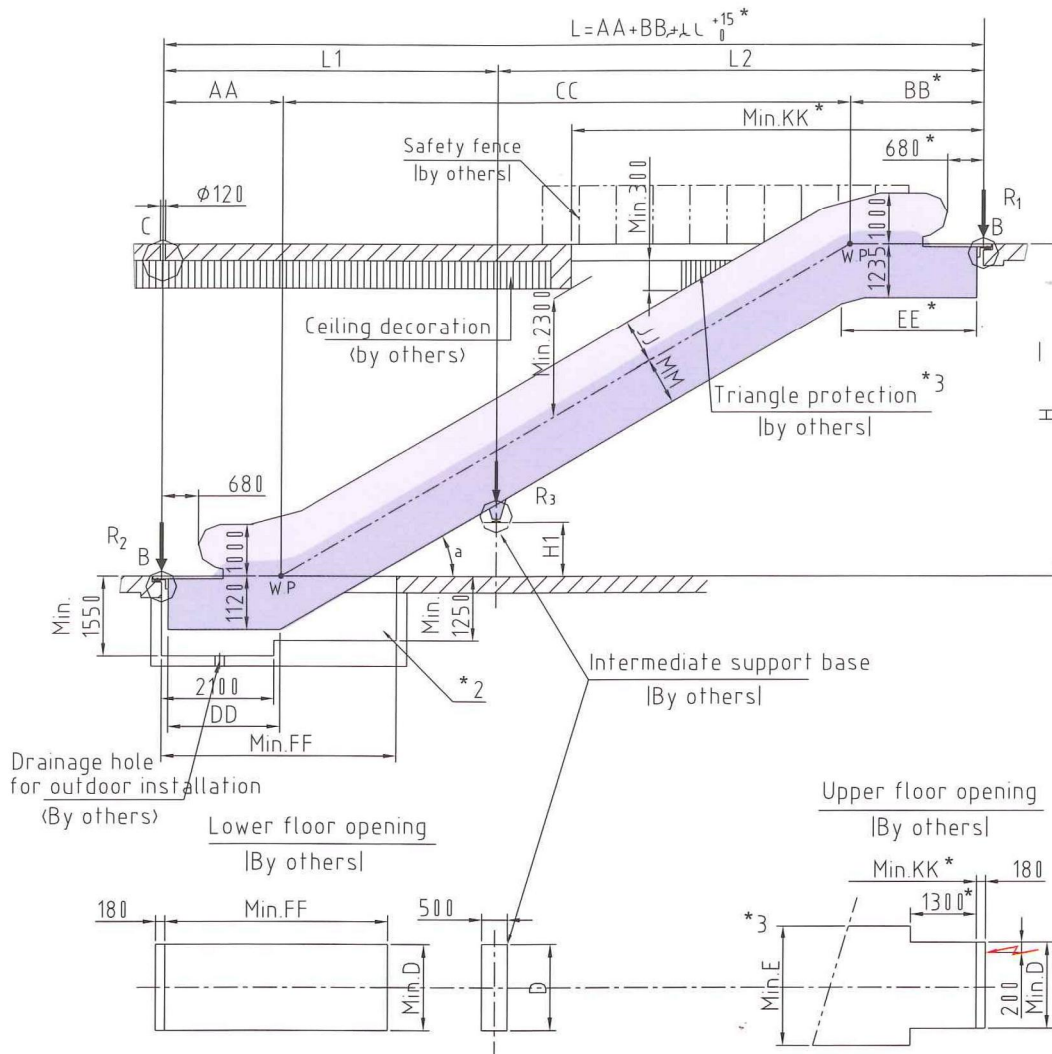
A	W/o intermediate support	With one intermediate support
600	R1 = 3.35 x L + 15.5	R1 = 3.35 x L2 + 11.5
	R2 = 3.35 x L + 10	R2 = 3.35 x L1 + 4.5
		R3 = 3.35 x L + 3.5
800	R1 = 3.70 x L + 17	R1 = 3.7 x L2 + 12
	R2 = 3.7 x L + 11	R2 = 3.7 x L1 + 4.7
		R3 = 3.7 x L + 4
1000	R1 = 4.15 x L + 18.5	R1 = 4.15 x L2 + 12.5
	R2 = 4.15 x L + 11.5	R2 = 4.15 x L1 + 4.9
		R3 = 4.15 x L + 4.5

- Notes:
- Definitions:
 - Mark *1: Supports need to be in true level
 - Mark*2: If there is pit, pit need to be water proof and smooth
 - Mark *3: If dimension E can't be guaranteed, a guard acc.EN115 must be provided as shown (by others)
 - Mark *4: only for outdoor installation.
 - According to EN115, the entrance of both landing must have enough area to facilitate the traffic flow
 - Dimension with mark * should be extended 500mm in case 600mm step or double drive or in case VVVF.
 - Intermediate support is reinforced in case of horizontal over 15m please contact us.
 - All dimension refer to finished dimension is in mm

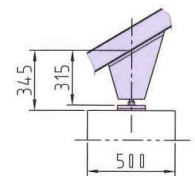


Escalator SH

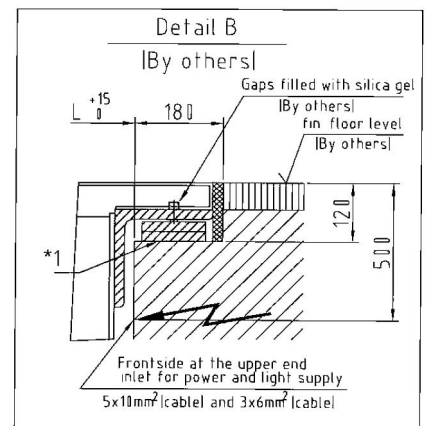
Load capacity Min.80kN
Hoisting hole |By others



Detail H



Detail B
By others



Type	angle	Upper Radius	AA	BB	CC	DD	EE	FF	JJ	MM	KK
SH302	30°	1500	2231	2598	Hx1.732	2370	2815	4530	870	1060	8000
SH303	30°	1500	2631	2998	Hx1.732	2770	3215	4930	870	1060	8400
SH304	30°	1500	3031	3398	Hx1.732	3170	3615	5330	870	1060	8800
SH352	35°	1500	2266	2682	Hx1.428	2505	2780	4420	850	1080	7200
SH353	35°	1500	2666	3082	Hx1.428	2905	3180	4820	850	1080	7600
SH303	30°	2700	2863	3283	Hx1.732	3000	3500	5160	870	1060	8800
SH304	30°	2700	3263	3683	Hx1.732	3400	3900	5560	870	1060	9220

A	W/o intermediate support	With one intermediate support
600	R1 = 4.05 x L + 16.3	R1 = 4.05 x L2 + 14
	R2 = 4.05 x L + 8.5	R2 = 4.05 x L1 + 7
		R3 = 4.20 x L + 10
800	R1 = 4.45 x L + 17	R1 = 4.45 x L2 + 16
	R2 = 4.45 x L + 9.5	R2 = 4.45 x L1 + 7.5
		R3 = 4.7 x L + 11
1000	R1 = 4.95 x L + 19.5	R1 = 4.95 x L2 + 17.2
	R2 = 4.95 x L + 10.5	R2 = 4.95 x L1 + 8.3
		R3 = 5.2 x L + 11.3

For inclined balustrade			
A	600	800	1000
B	910	1110	1310
C	1195	1395	1595
D	1270	1470	1670
E	1910	2110	2310

For slim-vertical balustrade			
A	600	800	1000
B	837	1037	1273
C	1195	1395	1595
D	1270	1470	1670
E	1910	2110	2310

Notes:

1. Definitions:

- (1) Mark *1: Supports need to be in true level
- (2) Mark*2: If there is pit, pit need to be water proof and smooth
- (3) Mark *3: If dimension E can't be guaranteed, a guard acc.EN115 must be provided as shown (by others)
- (4) Mark *4: only for outdoor installation.

2. According to EN115, the entrance of both landing must have enough area to facilitate the traffic flow
3. Dimension with mark * should be extended 500mm in case 600mm step or double drive or in case VVVF.
4. Intermediate support is reinforced in case of horizontal over 15m please contact us.
5. All dimension refer to finished dimension is in mm

Note: 1: L, L1 and L2 is in meter

2: L1 and L2 do not exceed 15m.

Conveyors

TS

CONVEYOR For private use		MAIN FEATURES			
Model	Installation	Vertical rise (m)	Inclination (°)	Step width (mm)	Speed (m/s)
TS 10	Indoor, outdoor with coverage, completely outdoor	from 2,0m to 7,5m	10°	800 - 1000	0,50
TS 11	Indoor, outdoor with coverage, completely outdoor	from 2,0m to 7,5m	11°	800 - 1000	0,50
TS 12	Indoor, outdoor with coverage, completely outdoor	from 2,0m to 7,5m	12°	800 - 1000	0,50

Duty Cycle up to 16 hours a day

TT

CONVEYOR For private use		MAIN FEATURES			
Model	Installation	Vertical rise (m)	Inclination (°)	Step width (mm)	Speed (m/s)
TT 10	Indoor, outdoor with coverage, completely outdoor	from 2,0m to 8,0m	10°	800 - 1000	0,50
TT 11	Indoor, outdoor with coverage, completely outdoor	from 2,0m to 8,0m	11°	800 - 1000	0,50
TT 12	Indoor, outdoor with coverage, completely outdoor	from 2,0m to 8,0m	12°	800 - 1000	0,50

Duty Cycle up to 16 hours a day

TP

CONVEYOR For private use		MAIN FEATURES			
Model	Installation	Vertical rise (m)	Inclination (°)	Step width (mm)	Speed (m/s)
TP 0-6	Indoor, outdoor with coverage, completely outdoor	from 14,0m to 120,0m	0° - 6°	1000 - 1200 - 1400	0,50

Duty Cycle up to 24 hours a day

Step / Pallet Width [m]	Nominal Speed [m/s]	
	0,50	0,65
600	3600 pers/h	4400 pers/h
800	4800 pers/h	5900 pers/h
1000	6000 pers/h	7300 pers/h

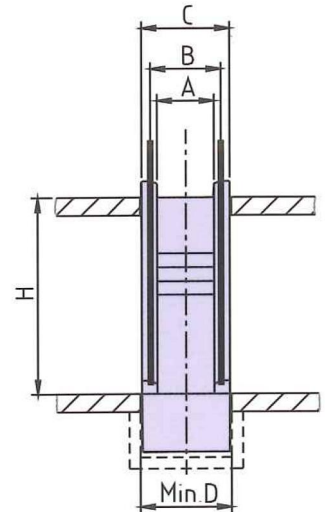
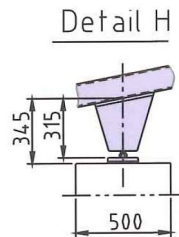
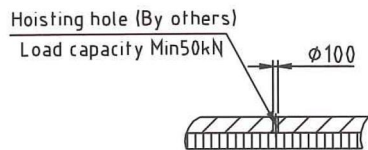
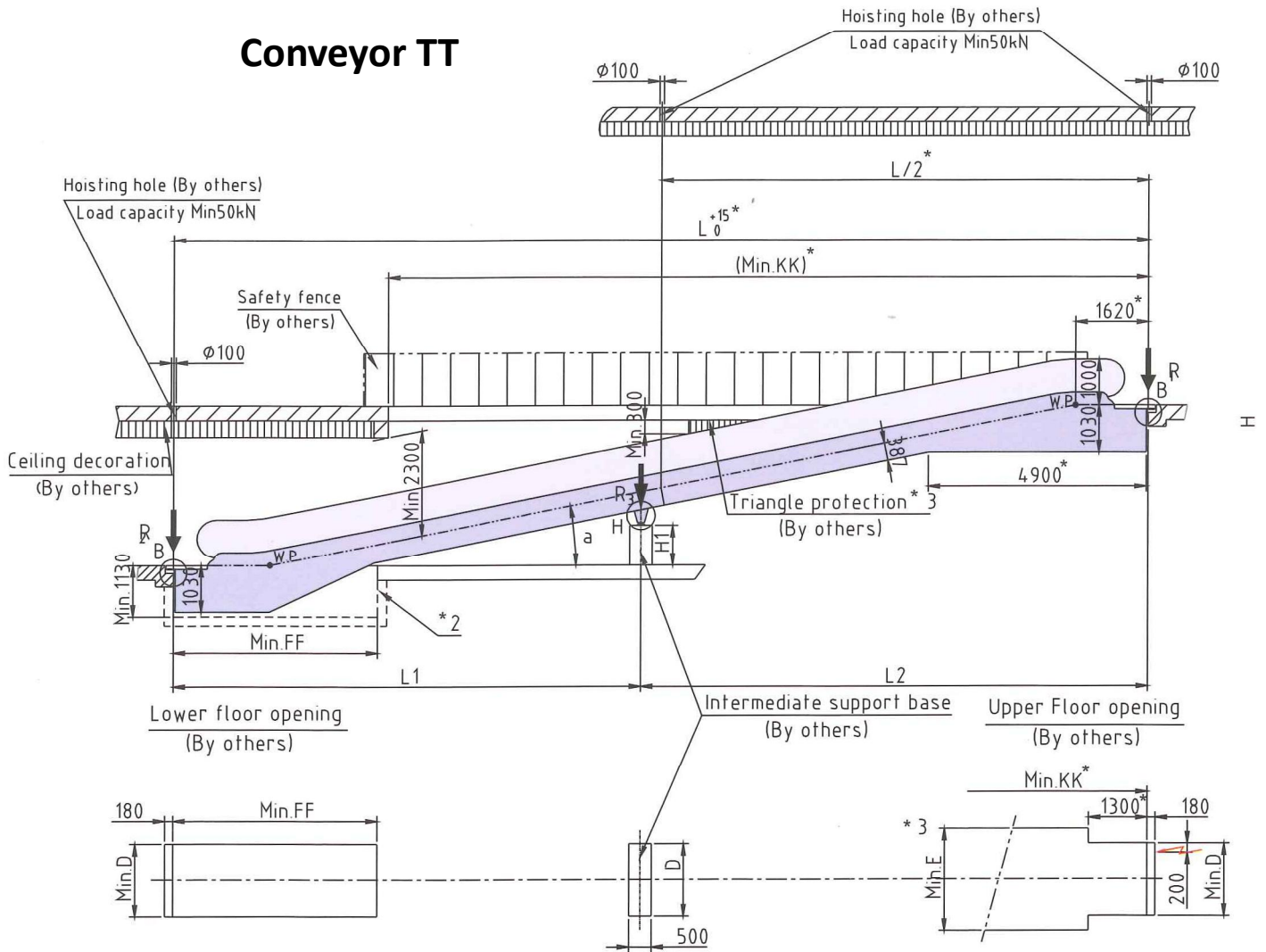
Capacity per hour according to step width and speed

Available with vertical balustrades in tempered safety glass (standard), upon request solid vertical or inclined in stainless steel

Intermediate support in case of length of more than 15m

It is possible to realize inclined conveyors of vertical rise up to 10 m in height

Conveyor TT



Type	A	L	KK	FF
TT10	10°	H x 5.671 + 3945	17700	4750
TT11	11°	H x 5.145 + 3755	16700	4550
TT12	12°	H x 4.705 + 3595	15800	4500

A	800	1000
B	1037	1237
C	1345	1545
D	1400	1600
E	2050	2250

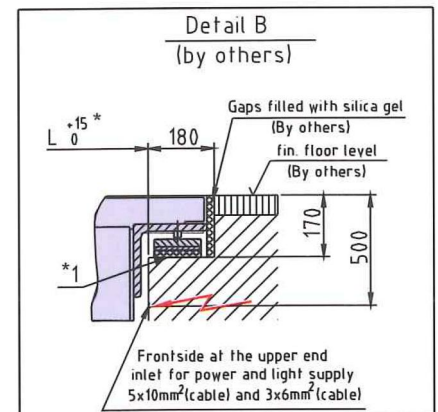
A	Reaction Force (KN)
800	R1 = 3.45 x L2 + 12.5
	R2 = 3.45 x L1 + 4
	R3 = 4 x L + 14.5
1000	R1 = 3.85 x L2 + 14
	R2 = 3.85 x L1 + 4.5
	R3 = 4.5 x L + 15.5

Note: 1: L, L1 and L2 is in meter
2: L1 and L2 do not exceed 15m.

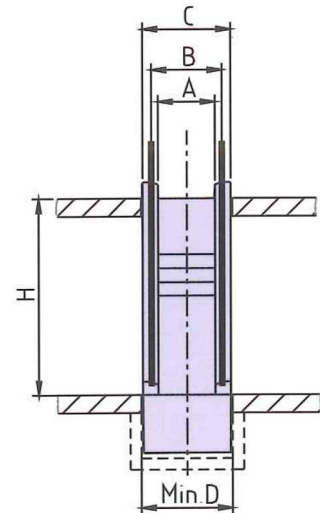
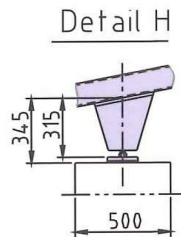
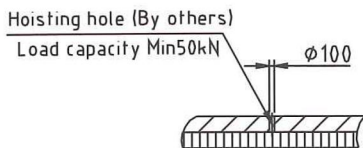
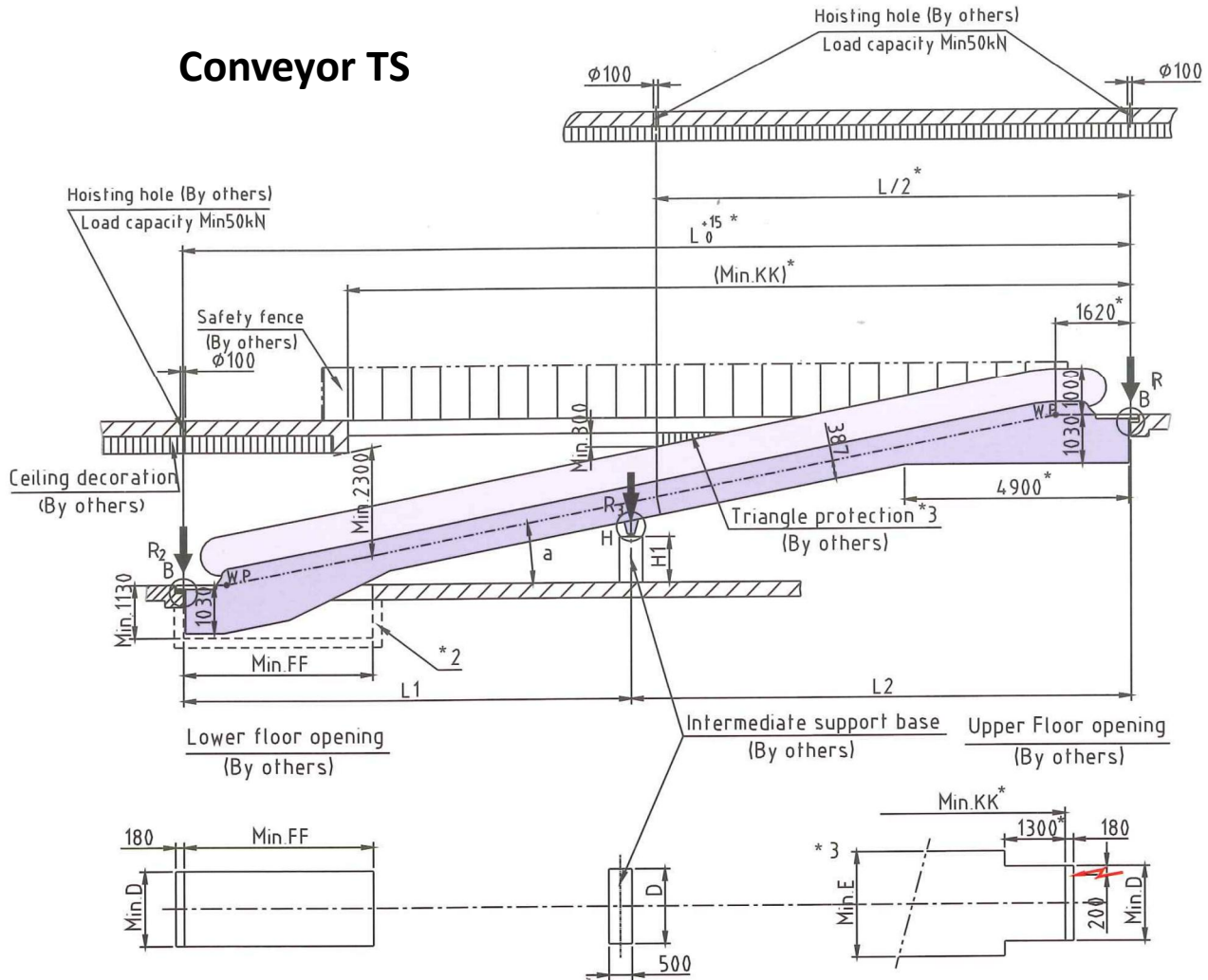
Notes:

1.Definitions:

- (1) Mark *1: Supports need to be in true level
- (2) Mark*2: If there is pit, pit need to be water proof and smooth
- (3) Mark *3: If dimension E can't be guaranteed, a guard acc.EN115 must be provided as shown (by others)
2. According to EN115, the entrance of both landing must have enough area to facilitate the traffic flow
3. All dimension referto finished dimension is in mm
4. The intermediate support base can be made by concrete or metallic structure (by others)
5. Dimensions with mark *should be extended 500mm in case double drive or VVVF.



Conveyor TS

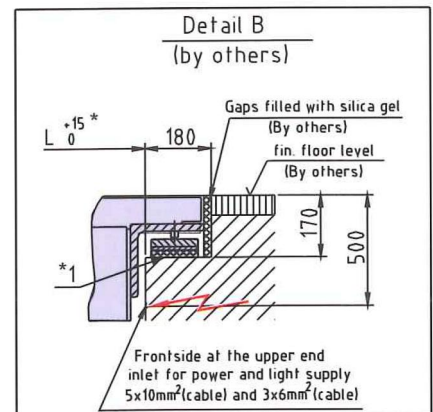


Type	A	L	KK	FF
TS10	10°	H x 5.671 + 3945	17700	4750
TS11	11°	H x 5.145 + 3755	16700	4550
TS12	12°	H x 4.705 + 3595	15800	4500

A	800	1000
B	1037	1237
C	1345	1545
D	1400	1600
E	2050	2250

A	Reaction Force (KN)
800	$R1 = 3.45 \times L2 + 12.5$
	$R2 = 3.45 \times L1 + 4$
	$R3 = 4 \times L + 14.5$
1000	$R1 = 3.85 \times L2 + 14$
	$R2 = 3.85 \times L1 + 4.5$
	$R3 = 4.5 \times L + 15.5$

Note: 1: L, L1 and L2 is in meter
2: L1 and L2 do not exceed 15m.

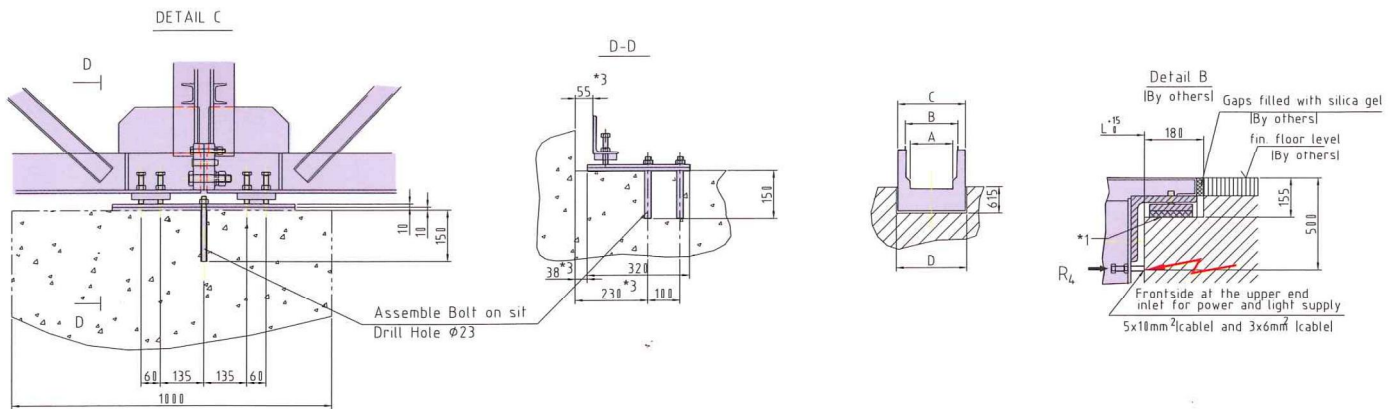
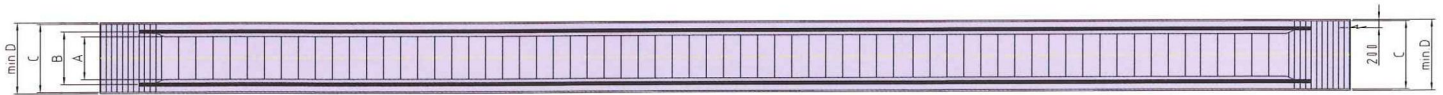
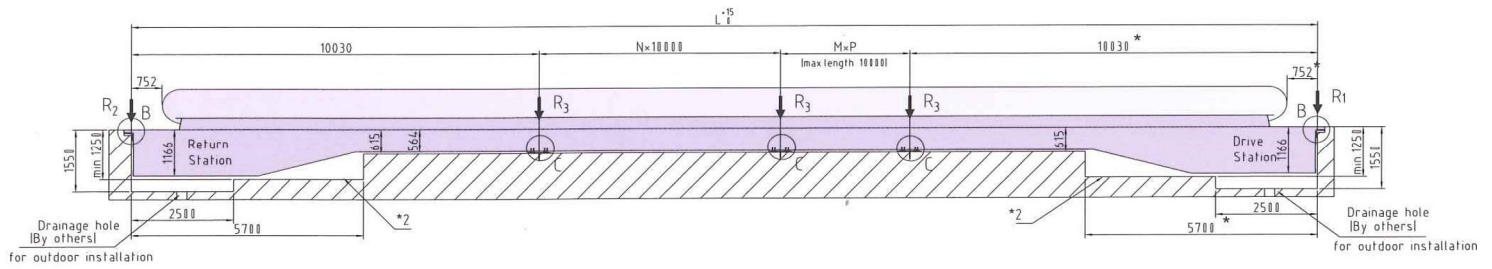


Notes:

1.Definitions:

- (1) Mark *1: Supports need to be in true level
- (2) Mark*2: If there is pit, pit need to be water proof and smooth
- (3) Mark *3: If dimension E can't be guaranteed, a guard acc.EN115 must be provided as shown (by others)
2. According to EN115, the entrance of both landing must have enough area to facilitate the traffic flow
3. All dimension referto finished dimension is in mm
4. The intermediate support base can be made by concrete or metallic structure (by others)
5. Dimensions with mark *should be extended 500mm in case double drive or VVVF.

Conveyor TP



A	1000	1200	1400
Reaction Force (KN)			
R1	55	64	73
R2	53	61	69
R3	90	110	125
R4	5	5	5

Inclined balustrade

A	1000	1200	1400
B	1310	1510	1710
C	1595	1795	1995
D	1670	1870	2070

Vertical balustrade

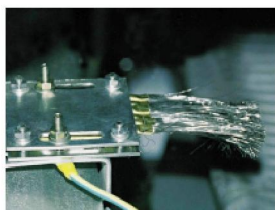
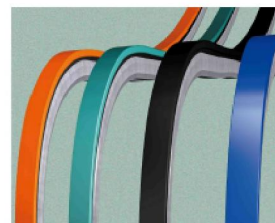
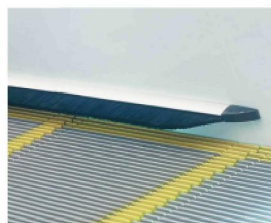
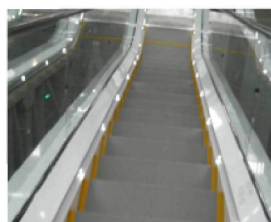
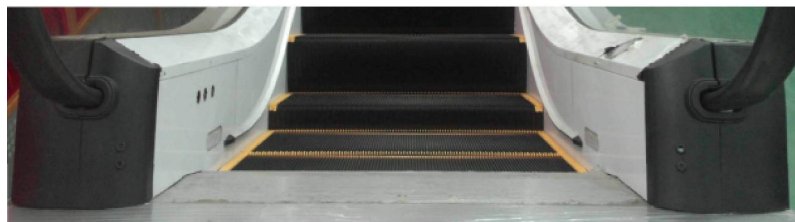
A	1000	1200	1400
B	1237	1437	1637
C	1595	1795	1995
D	1670	1870	2070

Notes:

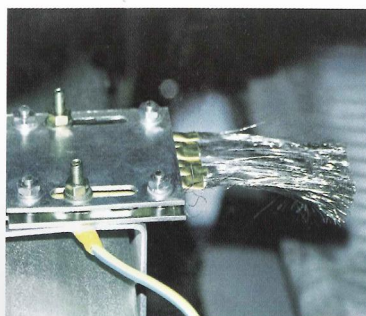
1. Definitions:

- (1) Mark *1: Supports need to be in true level
- (2) Mark *2: If there is pit, pit need to be water proof and smooth
- (3) Mark *3: If dimension D is changed, the dimension marked should be adjusted
2. According to EN115, the entrance of both landing must have enough area to facilitate the traffic flow
3. Dimensions with mark * should be extended 500mm in case double drive or VVVF.
4. All dimension referto finished dimension is in mm.

Optional	SM	SH	TS/TT/TP
Handrail Colour	•	•	•
Step/PalletColour	•	•	
Surge Protection	•	•	•
Step Safety Demarcation	•	•	
Fire Interface	•	•	•
Dry Contact for Remote Monitoring System	•	•	•
Automatic Lubrication System	•	•	•
Comb Heating System	•	•	•
Truss Heating System	•	•	•
Fault Diagnostic System	•	•	•
Step/PalletMissing Monitor	•	•	•
Brake Distance Monitor	•	•	•
Handrail Speed Monitor	•	•	•
SkirtingBrush	•	•	•
VVVFControl	•	•	•
Auto-Start	•	•	•
OutsideCladding	•	•	•
Safety Brake onMainShaft	•		•
TrafficLight	•	•	•
CombLight	•	•	•
Skirting Lighting (LEDDotLight)	•	•	•
Landing Plate Contaci	•	•	•
Handrail Broken Contact	•	•	•
Step Upthrust Contaci	•	•	•
Float Contact	•	•	•
Drive-chain Contact	•	•	•
Cable Connectorfor intersection	•	•	•



Standard	SM	SH	TS/TT/TP
Skirting Contacts	•	•	
Handrail Entry Contacts	•	•	•
Step/Pallet chains contacts	•	•	•
Step/Pallet sag contacts	•	•	•
Phase Monitor	•	•	•
Motor Overload	•	•	•
Motor Overheat	•	•	•
Comb Contacts	•	•	•
Step Gap Illumination	•	•	
Maintenance Interlock Protection	•	•	•
Alarm buzzer	•	•	•
Speed Monitor with Electrical Reverse Detection	•	•	•
Step/Pallet anti-static brush	•	•	•
Emergency stop buttons	•	•	•
Step/Pallet reversing fences	•	•	•
Service brake release contact	•	•	•
Soft Stop	•	•	•





Email: paravia@paravia.net

Tel: +39 089 84.92.94

Fax: +39 089 98.30.120

Web: www.paravia.net



SYSTEMS FOR THE FUTURE